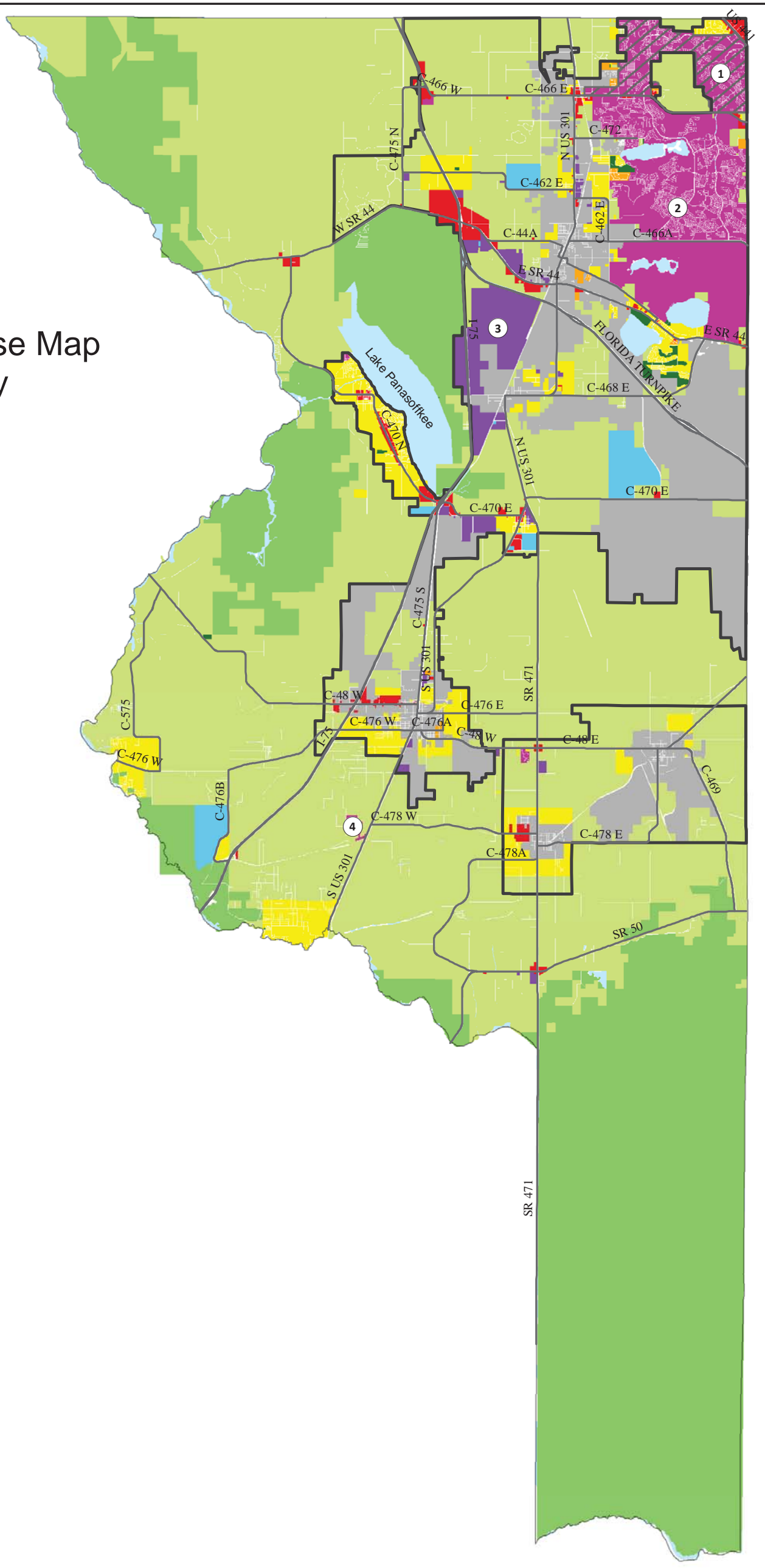


2035 Future Land Use Map Sumter County Map 1-1



Legend

- Major Roads
- ▭ Urban Development Boundary
- ▨ Overlay Subject to Policy Restrictions
- Designation/Allowable Densities**
- Light Green: Agricultural (AGR); 1 unit/10 acres
- Yellow: Rural Residential (RR); 1 to 2 units/acre
- Orange: Urban Residential (UR); 4 to 6 units/acre
- Red: Commercial (COM)
- Purple: Industrial (IND)
- Light Blue: Public, Institutional (PI)
- Dark Green: Conservation (CON)
- Dark Green: Recreation (REC)
- Grey: Municipal Jurisdiction (MUN)
- Magenta: Mixed Use (MU)
- Light Blue: Water Features

OVERLAYS SUBJECT TO POLICY RESTRICTIONS

- 1 Tri-County Villages DRI (policy 1.3.1U)
- 2 Villages of Sumter County DRI (Policy 1.3.2U)
- 3 Monarch Ranch (Policy 1.1.5U)
- 4 Southern Villas RV Resort (Policy 1.1.6U)



Sumter County BOCC
Geographic Information System
(352) 569-6732 or 689-4479

This map product was prepared from a Geographic Information System established by the Sumter County GIS Office. The Sumter County GIS Office, its employees, agents and personnel, make no warranty to its accuracy, and in particular its accuracy as to labeling, dimensions, contours, property boundaries or placement or location of any map features thereon. The Sumter County GIS Office, its employees, agents and personnel MAKE NO WARRANTY OF MERCHANTABILITY OR WARRANTY FOR FITNESS OF A USE FOR A PARTICULAR PURPOSE EXPRESSED OR IMPLIED WITH RESPECT TO THIS MAP PRODUCT.

Independent verification of all data contained on this map product should be obtained by any user of this map.
Revised June 15, 2016